

NAoPri

National Audit of
Primary Breast Cancer

NAoPri, Clinical Effectiveness Unit

Royal College of Surgeons of England
38-43 Lincoln's Inn Fields
London WC2A 3PE

E: BreastCancerAudits@rcseng.ac.uk

T: 020 7869 6610

[NAoPri_news](#)

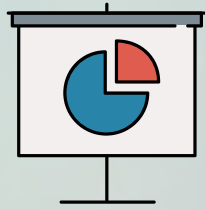
NAoPri Newsletter, July 2024

Highlights

- 1** Quarterly Report
- 2** Patient Version of the Scoping Survey
- 3** Upcoming Publications
- 4** Quality Improvement Plan

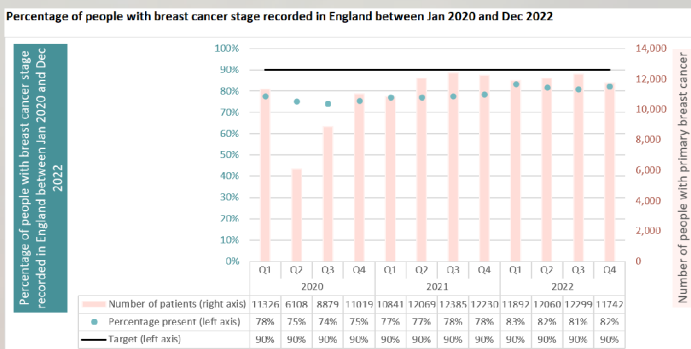
Quarterly Report

The second NAOpri Quarterly Report was published on 11th July 2024 and includes:



- Updates on two data completeness indicators for people with primary breast cancer.
- Patient characteristics data giving an overview of people with primary breast cancer.

You can access the Quarterly Report [here](#)



Patient Summary of Scoping Document available to download!

This document for patients and the public summarises activities carried out to define the scope of the audit, including the Scoping Survey carried out in 2023, and key information including:

- priority areas of care identified as most in need of improvement,
- things the audit will need to consider when carrying out the audit, and
- how the audit includes patients in the work it does.

You can access the summary [here](#).



Upcoming Publications

State of the Nation Report:
September 2024

Expanded Quarterly Report:
October 2024

CONTACT US

Email any breast audit-specific questions to:
breastcanceraudits@rcseng.ac.uk

Follow us on X (formerly Twitter):
[@NAoPri_news](#)

Quality Improvement Plan

The NAOpri Quality Improvement (QI) Plan is due for publication soon.

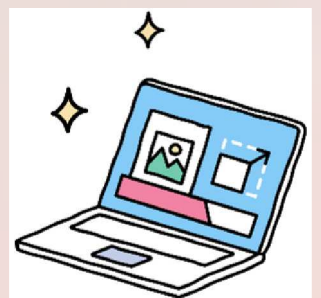
The QI Plan sets out the audit:

- scope
- care pathway
- 5 QI goals and
- 10 performance indicators

These indicators will report in the NAOpri's 1st annual state of the nation report, scheduled for publication in September 2024.

The QI plan also describes a range of improvement methods and activities the NAOpri could utilise to deliver these goals.

Please contact the Project Team if you have any questions about this.



This email was sent to you by NAOpri, part of the National Cancer Audit Collaborating Centre (NATCAN) based at the Royal College of Surgeons of England. To ensure continued receipt of our emails please add us to your address book or safe list. In accordance with the General Data Protection Regulation (GDPR), NATCAN is committed to protecting your privacy. If you wish to know more please access our [privacy policy](#). If you wish to unsubscribe from all NAOpri communications, please click [here](#). © RCSEng 2024, Registered Charity No. 212808